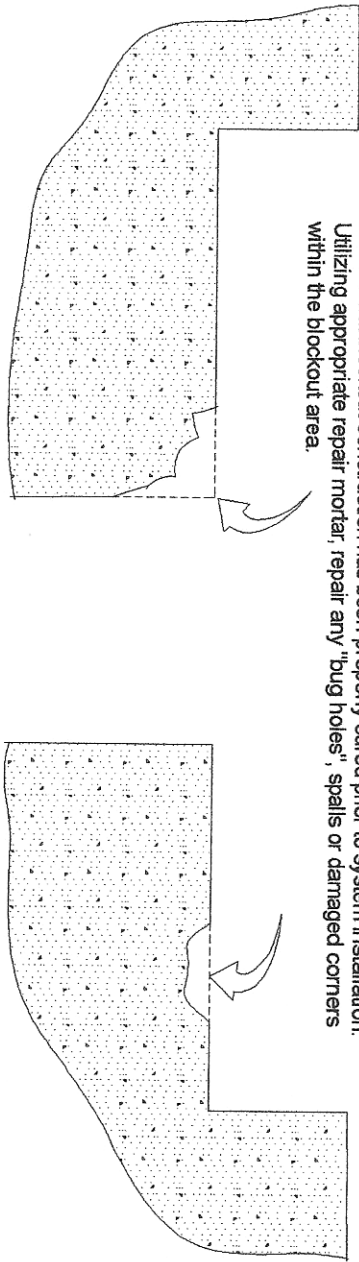


Step # 1

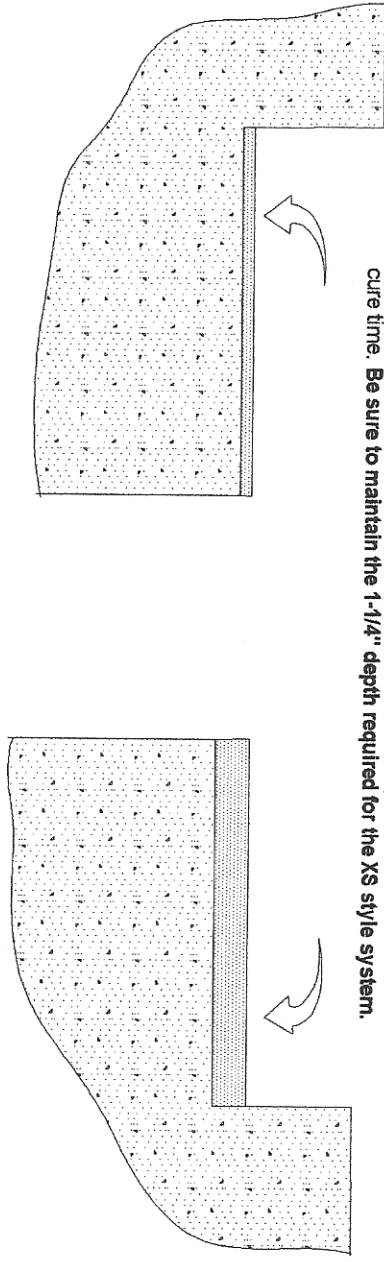
Iso-Flex Xtreme Joint System Installation Procedures

Ensure that blackout construction has been properly cured prior to system installation. Utilizing appropriate repair mortar, repair any "bug holes", spalls or damaged corners within the blackout area.



Step # 2

The base of blackout on each side of the joint gap must be on the same plane. For this reason it may be required that a leveling mortar (by others) be utilized. Refer to manufacturers of these products to ensure proper use and sufficient cure time. Be sure to maintain the 1-1/4" depth required for the XS style system.



LymTal International, Inc.

Scale: NTS

Drawn By: LAG

Date: 10/4/04

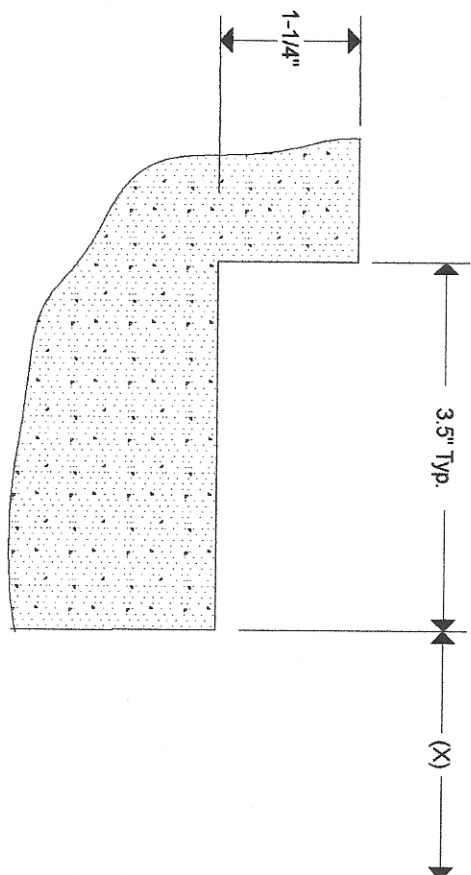
Revised:

Iso-Flex Xtreme Joint Installation

Surface Plate Design

XS Installation Sheet 1

Step # 3

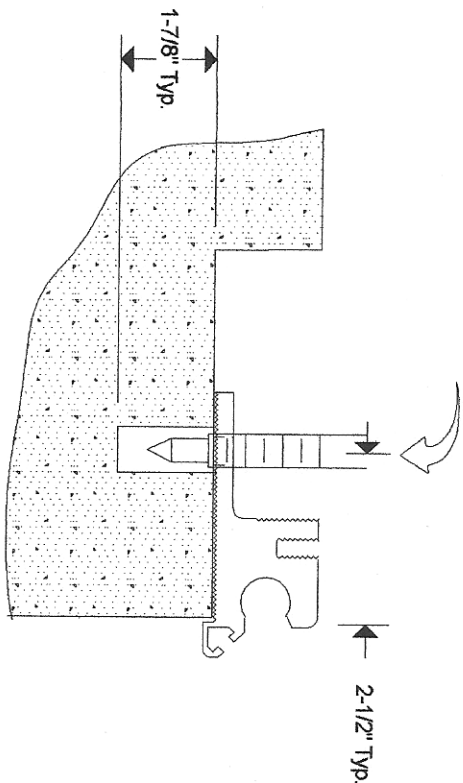


Blockout dimensions for the selected system size should be in conformance with the chart attached.

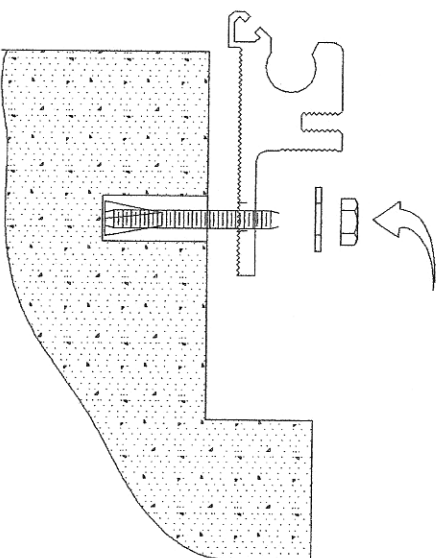
SYSTEM TYPE	JOINT OPENING (X)	JOINT OPENING	
		MIN.	MAX.
X20S	2.00	1.50	3.00
	50.800	38.100	76.200
X40S	4.00	1.50	6.00
	101.600	38.100	152.401
X60S	6.00	1.50	9.00
	152.401	38.100	228.601
X80S	8.00	1.50	12.00
	203.201	38.100	304.801
X100S	10.00	1.50	15.00
	254.001	38.100	381.002
X120S	12.00	1.50	18.00
	304.801	38.100	457.202
X150S	15.00	1.50	22.50
	381.002	38.100	571.502
X180S	18.00	1.50	27.00
	457.202	38.100	685.803

Step # 4

Using the Base Extrusion F as the template, locate and drill holes at the punched hole spacing provided. Utilize a 3/8" D. drill bit.



Install the Powers "Power Stud" anchor into the drilled hole. Locate the Base Extrusion F over the anchor and position the washer and nut. Next drive the anchor assembly with a hammer until seated. Torque to 30-32 Ft-Lbs.



NOTE:

1. For specific installation data on the "Power Stud" please contact Powers Fasteners. Their phone number is (914) 235-6300. Or their website is www.powers.com. The "Power Stud" utilized is their catalog No. 7413.
2. As the Base Extrusions are being located and attached, it is important to utilize a straight edge in order adjust for proper elevation. Shims may be required if blockouts are not in proper alignment.

LymTal International, Inc.

Scale: NTS

Drawn By: LAG

Date: 10/4/04

Revised:

Iso-Flex Xtreme Joint Installation

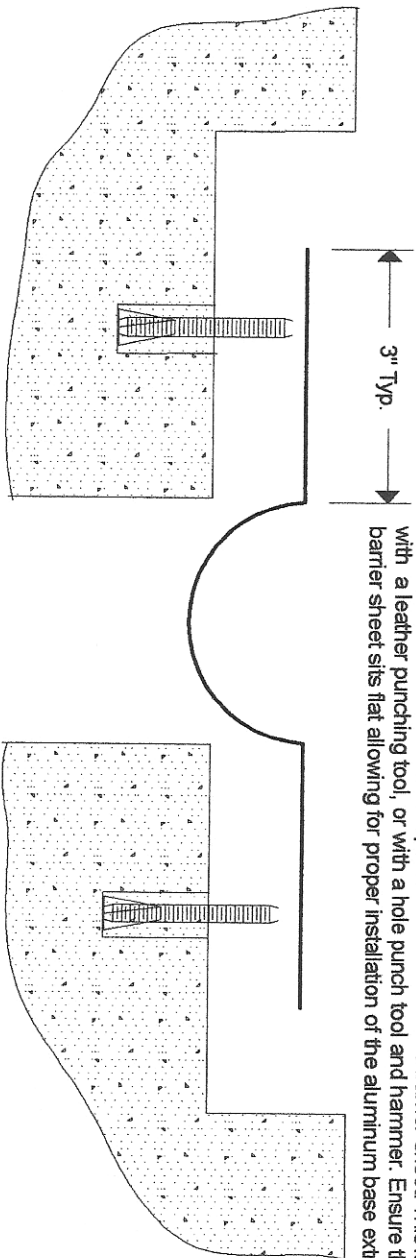
Surface Plate Design

XS Installation Sheet 2

Step # 4A

Optional Moisture Barrier Sheet (MBS) Installation

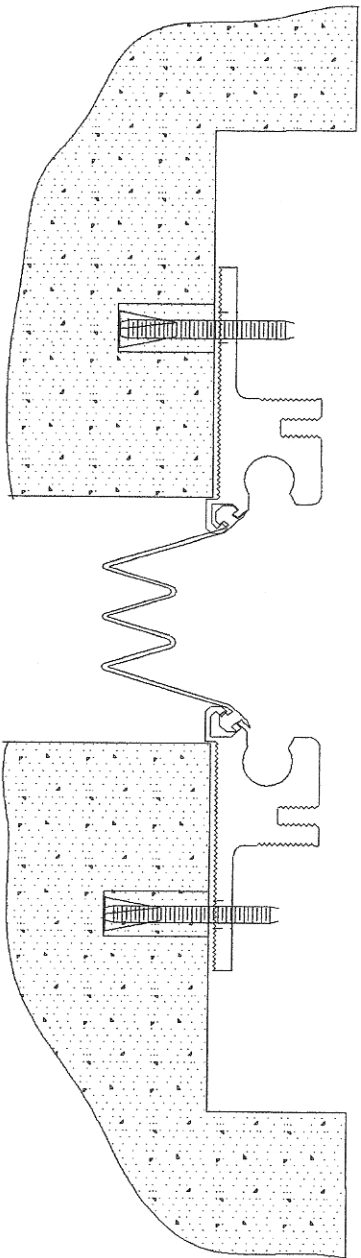
Once the anchors are drilled and installed, the optional Iso-Flex MBS (moisture barrier sheet) can be installed. Holes must be field punched in the moisture barrier sheet. This is best accomplished with a leather punching tool, or with a hole punch tool and hammer. Ensure that the moisture barrier sheet sits flat allowing for proper installation of the aluminum base extrusion.



Step # 4B

Optional Moisture Barrier Extrusion (MBE) Installation

The interlocking Iso-Flex MBS (moisture barrier extrusion) can also be installed. When selecting the MBE series moisture barrier, be sure to size according to the Xtreme joint system installed. The MBE series barrier installs easily using a small roller or screen installing tool.



LymTal International, Inc.

Scale: NTS

Drawn By: LAG

Date: 10/4/04

Revised:

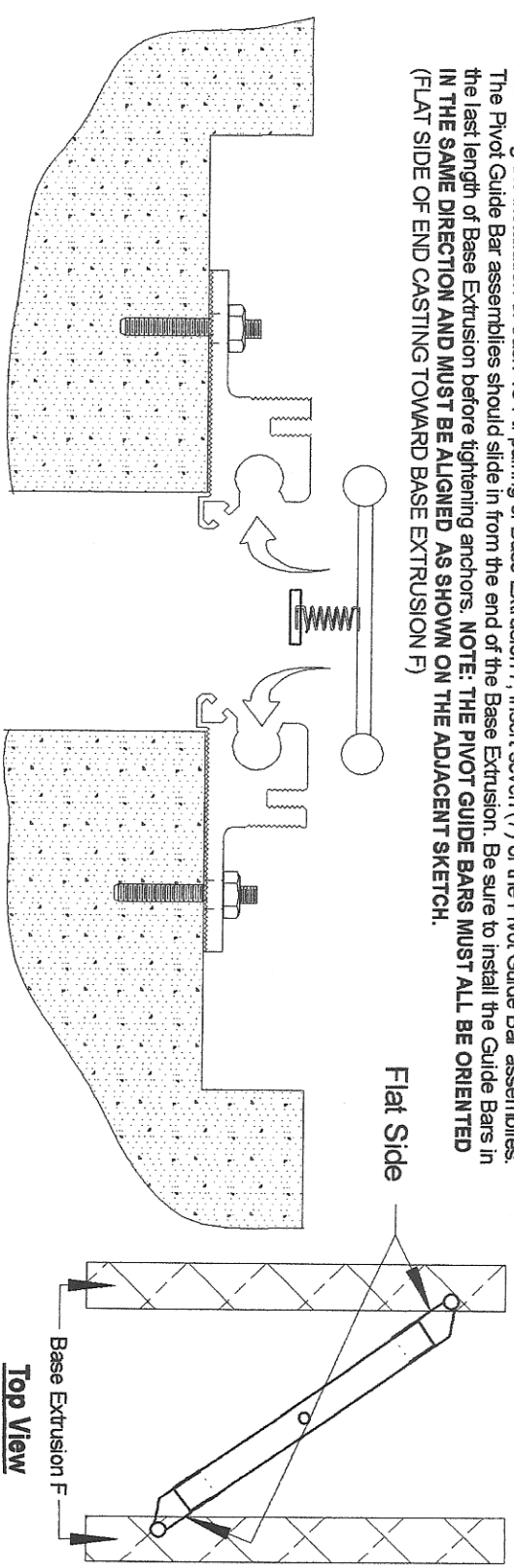
Iso-Flex Xtreme Joint Installation

Surface Plate Design

XS Installation Sheet 2a

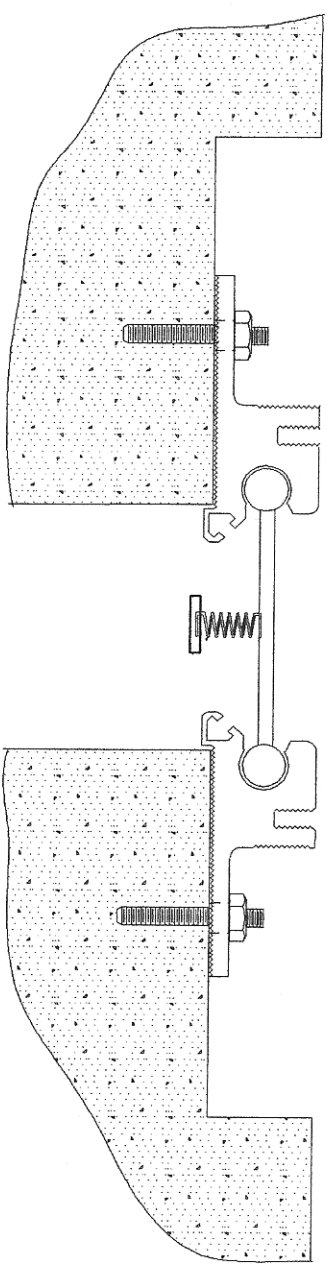
Step # 5

Following the installation of each 10 Ft. pairing of Base Extrusion F, insert seven (7) of the Pivot Guide Bar assemblies. The Pivot Guide Bar assemblies should slide in from the end of the Base Extrusion. Be sure to install the Guide Bars in the last length of Base Extrusion before tightening anchors. **NOTE: THE PIVOT GUIDE BARS MUST ALL BE ORIENTED IN THE SAME DIRECTION AND MUST BE ALIGNED AS SHOWN ON THE ADJACENT SKETCH.** (FLAT SIDE OF END CASTING TOWARD BASE EXTRUSION F)



Step # 6

Guide Bars installed and spaced with 7 per 10 Ft. section of base extrusion.



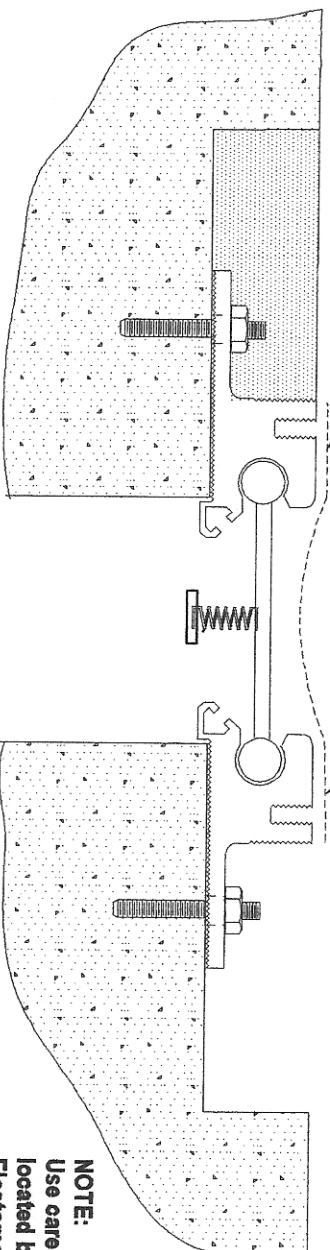
<i>LymTal International, Inc.</i>	
Scale: NTS	Drawn By: LAG
Date: 10/4/04	Revised:
Iso-Flex Xtreme Joint Installation	
Surface Plate Design	XS Installation Sheet 3

Step #7

Protect concrete surface with duct tape

Prior to installing elastomeric concrete filler, protect the system by taping visqueen or roofing paper over components.

Install Iso-Flex 900 Elastomeric Concrete, compacting with a margin trowel to eliminate voids.



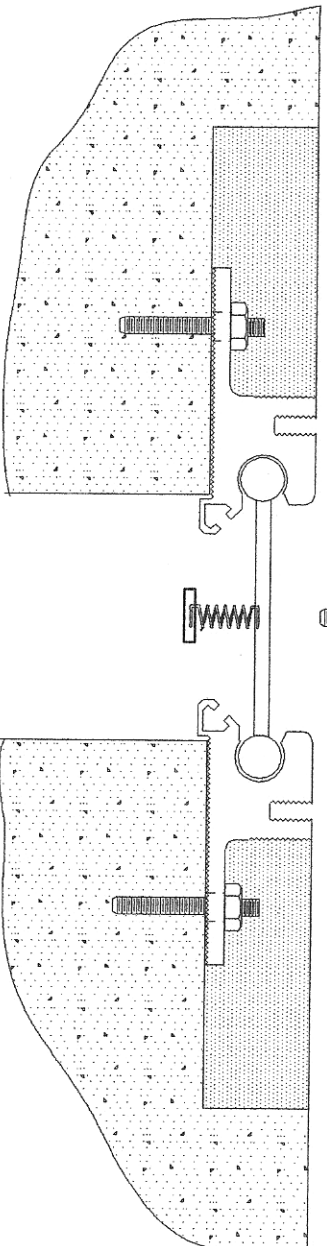
NOTE:
Use care to protect vehicles and other property located below the work area when placing Elastomeric Concrete.

Step #8

Align aluminum cover plate and install stainless steel screw until tensioned. Do not tighten completely causing the spring to have no resilience.

3/8" x 4" Stainless Screw

Aluminum Cover Plate



LymTal International, Inc.

Scale: NTS

Drawn By: LAG

Date: 10/4/04

Revised:

Iso-Flex Xtreme Joint Installation

Surface Plate Design

XS Installation Sheet 4